

L100 Wireless Light Tag

User Manual



HYCO
IoT Innovator

www.hycoiot.com

Disclaimer

Disclaimer ©2018 Shanghai Hyco Genyong Technology Co., Ltd. All rights reserved.

Please read through the manual carefully before using the product and operate it according to the manual. It is advised that you should keep this manual for future reference.

Do not disassemble the device or remove the seal label from the device. Otherwise, Shanghai Hyco Genyong Technology Co., Ltd. does not assume responsibility for the warranty or replacement.

All pictures in this manual are for reference only and actual product may differ. Regarding to the product modification and update, Shanghai Hyco Genyong Technology Co., Ltd. reserves the right to make changes to any software or product to improve reliability, function, or design at any time without notice. Besides, the information contained herein is subject to change without prior notice.

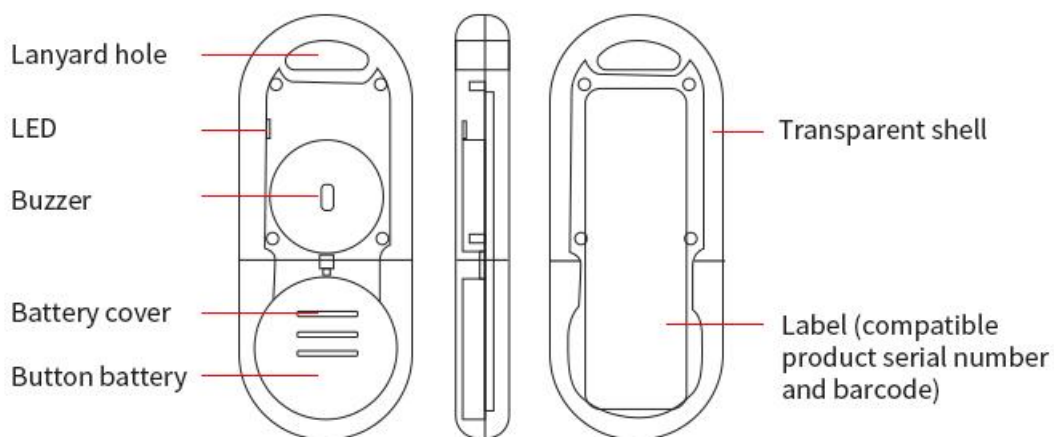
The products depicted in this manual may include software copyrighted by Shanghai Hyco Genyong Technology Co., Ltd. or a third party. The user, corporation or individual, shall not duplicate, in whole or in part, distribute, modify, decompile, disassemble, decode, reverse engineer, rent, transfer or sublicense such software without prior written consent from the copyright holders.

This manual is copyrighted. No part of this publication may be reproduced or used in any form without written permission from Hyco.

Please visit www.hycoiot.com or check the latest version of the specification sheet for the latest product information

1. Design

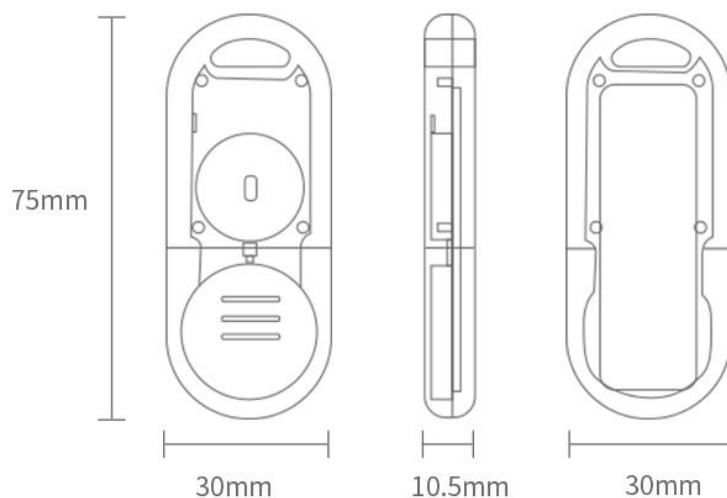
L100 is easy to use. It can be clipped on the items, quickly find the corresponding items through the light and sound, make the process more efficient, reduce the labor cost and save the shelf space at the same time. It has no need to install wiring. The battery is replaceable. One base station matches 65536 indicators at the same time.



2. Components

Components	Quantity
Wireless Light Tag	Provided as required
Button Battery	Provided as required
Base Station	Provided as required (1 pcs as default)
Clip	Provided as required (optional or self-purchased)
User Manual	1

3. Specification



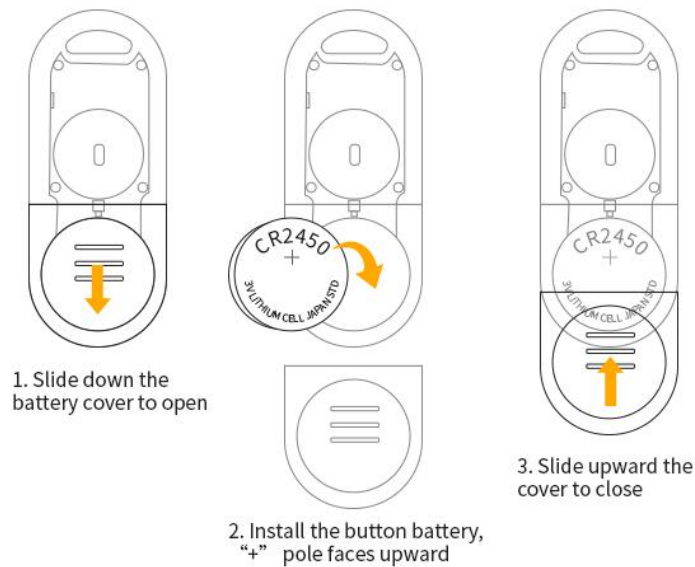
Model	L100
Weight	20g
Dimensions (W*D*H)	75mm*30mm*10.5mm
LED Indicator	RGB LED (programmable)
Buzzer	Supported
Communication	2.4G
Installation	Clip
Battery (Replaceable)	600mAh@3.0V
Battery Life*	12months
Operating Temperature	-10°C to 50°C (14°F to 122°F)
Humidity	0% - 80% RH (non condensing)

*The ideal testing conditions for the lab's endurance working hours are as follows: the L100 Wireless Light Tag is awakened and controlled by the base station once a day, and the sound and light prompts are turned off for 30 seconds before entering the standby test data. The actual endurance working hours are calculated based on the specific usage conditions

4. Operation

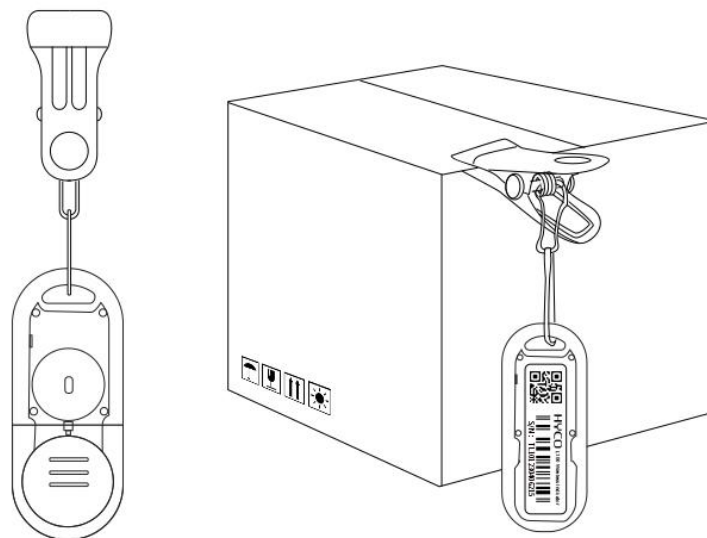
4.1 How to install

Slide down the battery cover to open. Set the battery "+" positive pole upward, put in the battery and slide the cover slides upward to close. The installation will be successful after a "tick" sound and the light flashes. If no tick or no light flashes, the installation is unsuccessful. (Battery replacement steps are same as above)



4.2 How to use

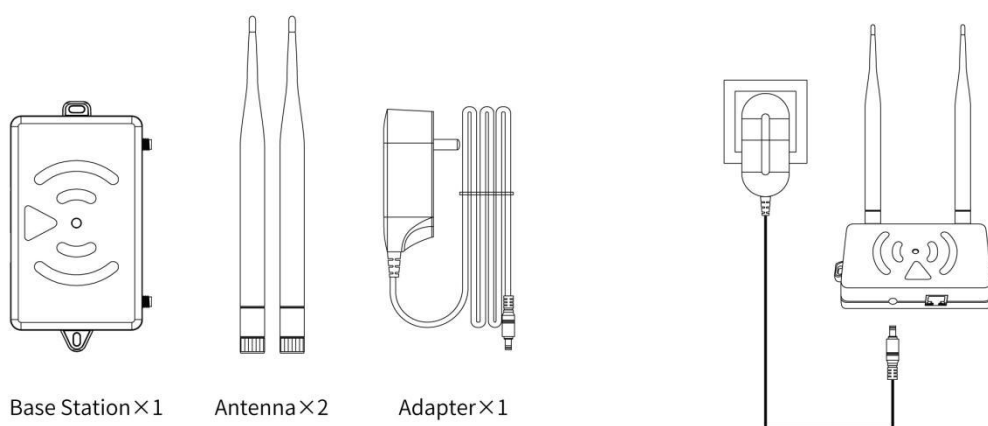
Put the clip and strap through the lanyard hole and hang it for use. No need wiring.



4.3 How to connect

Take the base station out of the box, install the antennas and connect the adapter to the power socket. The red light indicates installation finished.

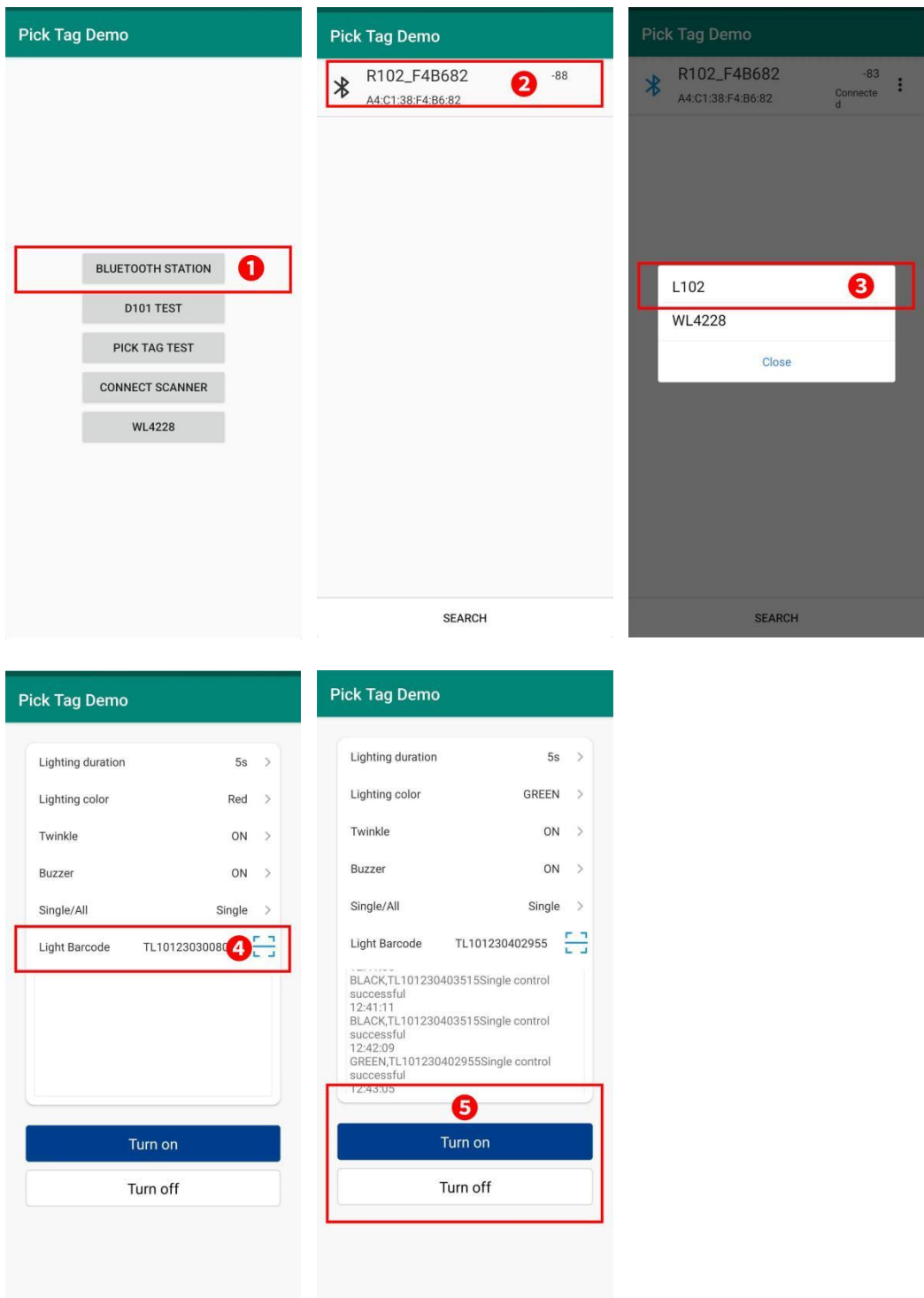
* To connect with WiFi, the base station should be connected to the router with a network cable. The green light indicates installation finished.



4.4 How to bind

Install **Pick Tag Demo APP** in the Android smart phone/tablet. Open the APP, click 'BLUETOOTH STATION' and search R102 base station at to match and connect via Bluetooth. After the connection completed, click 'L102' and find scanning button '['-]' at the homepage, and scan the S/N barcode or QR code on the indicator to bind, and then start light control.

*Download the Demo APP at <https://www.hycosoft.com/app-release.apk>



4.5 Indicator functions

Set the parameters 'time duration', 'light colour', 'flash', 'buzzer' and 'single/full control', click [on] and [off] button to check the light effect.

***Time Duration** (default 5 sec)

5 options: 0 sec, 5 sec, 10 sec, 20 sec, 30 sec.

***Light Colour** (default red)

5 options: red, green, yellow, blue, purple.

***Flash** (default on)

2 options: on and off.

***Buzzer** (default on)

2 options: on and off.

***Single/Full Control** (default single control)

> Full Control: to control the total indicators. It can light up all the indicators without scanning the QR code of them;

> Single Control: set the [Wireless Light Tag barcode] option, scan the barcode or QR code of the indicator with the demo APP and save it to light up individually.

5. Service

1 year warranty for the Wireless Light Tag (free repair within 1 year, except for human causes).

6. Notice

*6.1 Please handle the product carefully to avoid fail usage due to poor battery contact.

*6.2 Replace a new battery if the current one runs out of power.

*6.3 Please prevent the product from contacting with water and all kinds of liquids. Keep away from the inflammables when charging.

*6.4 Do not charge this product in the sun, near the heat source or closed environment.

HYCO Technology

Website: www.hycoiot.com

Email: global_sales@hycoiot.com